



## Enchanted Forest Sanctuary Teacher Information Packet

Dear Educator,

Thank you for your interest in bringing your students to the Enchanted Forest Sanctuary (EFS), where we are committed to providing exceptional experiential learning opportunities in the natural environment. All programs are correlated to the *Sunshine State Standards* to provide students with an engaging, interactive and enjoyable learning experience. Please review the Teacher Summary for grade level details. The EFS offers hiking trails, interactive exhibits, outdoor and indoor educational facilities, butterfly gardens, a picnic area and restrooms.

To provide students with a meaningful experience, **group size is limited to 72 students**. We can accommodate larger groups by dividing them into separate field days.

It is advised that you call to schedule your group as soon as possible to reserve your preferred date(s). Two to three weeks prior to your field day, I will contact you to discuss logistics and planning. This discussion will include team sizes, length and purposes of activities, minimum and maximum numbers of chaperones permitted and other required topics of discussion. Of course, you may contact me at any point in time with questions or comments!

There are **no entrance fees or activity fees** at the Enchanted Forest Sanctuary! Volunteers with the non-profit Friends of the Enchanted Forest conduct many of our guided hikes and educational activities. The Friends accept donations to support their efforts. The Friends also offer gift bags for students containing educational items for a \$1 per student donation from the school. This is an excellent method to ensure all students receive a souvenir from his/her experience at EFS. Please let us know prior to your visit if you would like bags for your group.

The Enchanted Forest Sanctuary also offers in-service training workshops for teachers. For more information, please contact us. We look forward to meeting your group and exploring the beautiful natural environment of the Enchanted Forest Sanctuary with them. Please call to discuss curriculum and scheduling options or if you have any questions.

Thank you,

Joan Faulls  
Sanctuary Steward

---

Enchanted Forest Sanctuary  
444 Columbia Blvd., Titusville, FL 32780  
Phone: 321-264-5185, Fax: 321-264-5190  
Website: [www.eelbrevard.com](http://www.eelbrevard.com)  
Email: [enchantedforest@brevardparks.com](mailto:enchantedforest@brevardparks.com)

# Enchanted Forest Sanctuary Grades 3-5 Study Trips Teacher Summary

**Title:** Forest Explorers

**Objectives:**

1. To provide 100% of students with an opportunity to experience and explore nature.
2. To provide 100% of students with an opportunity to study several annually assessed benchmarks:
  - a. 75% of students will be able to name at least one structural adaptation of a plant or animal species in the scrub or mesic hammock ecosystems (SC.G.1.2.2, annually assessed).
  - b. 100% of students will participate in the observation, recording and analyzing of saw palmetto data (SC.H.1.2.2, annually assessed).
  - c. 75% of students will correctly determine the age of a saw palmetto by dividing its length by the average growth per year using a calculator. (MA.A.3.2.3, annually assessed).

**Benchmarks:**

The Enchanted Forest Sanctuary study trips specifically focus on the above annually assessed benchmarks, but others may also be addressed.

**Philosophy:**

The philosophy of the Enchanted Forest Sanctuary (EFS) study trips for grades K-5 is to expose students to the outdoors to create an awareness and appreciation for local plants, animals and ecosystems. For middle and high school students, our philosophy encourages exploration of land and habitat management, human impacts upon the environment, and personal reflection of environmental stewardship.

All students are encouraged to explore, wonder, comment, question and reach conclusions on their own. By exploring the natural world around them, students are more likely to interact with nature in the future and apply what they've learned. This hands-on, interactive approach is called experiential learning. The Enchanted Forest Sanctuary primarily accomplishes experiential learning through guided hikes, nature-based activities and exploratory exhibits.

**Example Agenda (Grades 3-5):**

*This agenda is flexible depending upon scheduling, weather, and EFS staffing.*

Orientation	15 minutes
Guided Hike	1 hour 15 minutes
Lunch	30 minutes
Activities	1 hour

# Enchanted Forest Sanctuary (EFS) Teacher Checklist

## Pre-Trip

- ✓ Review the Teacher Information Packet
- The EFS Naturalist will call two to three weeks before your visit to discuss program details. This *required* conversation is essential in coordinating the logistics of your study trip.
- Distribute the Parent Information handout to all participating parents and chaperones.
- Distribute the Chaperone Information handout to each chaperone.
- Divide your students into the specified number of teams as discussed with Sandy using the Teams Roster included (also available on-line) or a school form. **Requirement:** at least one adult from your school should be assigned to each team. Remember: no more than 18 students and 20 people total per team.
- Create a list of student names (first and last) that includes allergy and special medical conditions for all applicable students. Use either the Teams Roster or a school form. **This is required to participate in EFS study trips!**
- Notify us with any changes in student numbers, schedule or program options.

## Day of Study Trip

- Be sure to bring Parent Permission Forms with you. **Note: This is required to participate in EFS study trips!**
- Please bring at least *two* copies of the Teams Roster (or applicable school form) with allergy and medical conditions listed. **Note: This is required to participate in EFS study trips!**

## Post-Trip

- Please complete and send to us the teacher survey.

Thank you!!



## Parent Information for the Enchanted Forest Sanctuary Study Trip

### Location of the Study Trip

The Enchanted Forest Sanctuary (EFS) is one of many Sanctuaries managed by the Brevard County Environmentally Endangered Lands (EEL) Program. The mission of the EEL Program is protecting and preserving biological diversity through responsible stewardship of Brevard County's natural resources. The Enchanted Forest Sanctuary is over 450 acres located in the southern city limits of Titusville on State Road 405, just ½ mile west of US 1.

### Study Trip Activities

Your child's visit will be supervised by teachers, chaperones and trained EEL staff and volunteers to ensure safe exploration of EFS. Activities may include guided hikes, hands-on exploration in the Management and Education Center (Center) or other environmental education activities. All activities are led or monitored by trained EEL staff or volunteers. The EFS provides trails, a picnic area, outdoor amphitheatre, screened porch, classrooms and butterfly garden. The Center and some interpretive trails are accessible to all people regardless of age or ability.

### What should students and chaperones wear?

Students are likely to be hiking along dirt trails and must be appropriately attired.

*Clothing* Weather-appropriate and comfortable clothing suitable for the outdoors is strongly recommended. A light-colored cotton t-shirt and loose cotton pants or shorts are ideal in spring, summer and fall, while a jacket or sweatshirt is recommended in winter.

*Footwear* Comfortable hiking footwear such as sneakers or hiking boots is essential. Flip-flops, open-toe sandals and heels are NOT recommended.

### What should students bring?

- **A large bottle of water! (which can be re-filled at the Center)**
- Sunscreen and/or insect repellent
- Camera and/or binoculars (optional)

### What students should NOT bring:

- Hand-held video games (Gameboy, etc.)
- Music players or noisemakers of any kind
- Cell phones are required to be on vibrate or off during their visit



### Planning a Family Visit:

The Enchanted Forest Sanctuary provides many exciting activities for families. The Center is open daily from 9:00 a.m. to 5:00 p.m. Guided hikes are available on Saturdays at 10:00am for the general public. Please contact us for more information. There are no entrance fees to the EFS.

*Enchanted Forest Sanctuary Management & Education Center*

444 Columbia Blvd, Titusville, FL 32780

Phone: 321-264-5185

[www.eelbrevard.com](http://www.eelbrevard.com)

[enchantedforest@brevardparks.com](mailto:enchantedforest@brevardparks.com)

# Chaperone Information for the Enchanted Forest Sanctuary Study Trip

## Location of the Study Trip

The Enchanted Forest Sanctuary (EFS) is one of many Sanctuaries managed by the Brevard County Environmentally Endangered Lands (EEL) Program. The mission of the EEL Program is protecting and preserving biological diversity through responsible stewardship of Brevard County's natural resources. The Enchanted Forest Sanctuary is over 450 acres located in the southern city limits of Titusville on State Road 405, just ½ mile west of US 1.

## Chaperone Role

Chaperones play an important role at the EFS in providing a fun, positive learning experience for students. Chaperones are expected to supervise students during their visit. Chaperones primarily assist by **providing close supervision and maintaining discipline** to:

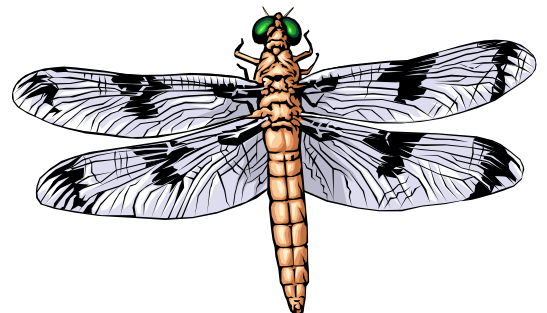
- ✓ Ensure student safety;
- ✓ Enhance student interactions and learning opportunities; and
- ✓ Protect the natural ecosystems from unintentional damage.

Chaperones also support hike guides and EFS staff with conducting any educational activities. The number of chaperones assisting with the guided hikes will depend on the size of the group. Guided hikes are limited to 20 people per team including students, teachers and chaperones. At least one chaperone is asked to walk at the back of the line on guided hikes to ensure that no students fall behind. Additional chaperones are welcome to enjoy the facilities until the hike groups return, and then assist with other activities. These activities may include hands-on exploration in the Discovery Room and Exhibit Room or assisting with environmental education activities. Chaperones may also be asked to assist with the coordination of lunch or snack times and assist students with restroom visits.

Please take a minute to review the Parent and Chaperone Information handout prior to the study trip. This handout will advise you on what to bring and how to dress for the day. You may also wish to visit [www.eelbrevard.com](http://www.eelbrevard.com) to familiarize yourself with the EFS. A schedule for your study trip can be obtained from the lead teacher of your group. If you have any questions about EFS, please contact us.

Have fun!

Enchanted Forest Sanctuary  
444 Columbia Blvd., Titusville, FL 32780  
Phone: 321-264-5185, Fax: 321-264-5190  
Website: [www.eelbrevard.com](http://www.eelbrevard.com)  
Email: [enchantedforest@brevardparks.com](mailto:enchantedforest@brevardparks.com)



## Enchanted Forest Sanctuary Teams Roster

School or Group Name: \_\_\_\_\_ Date of Study Trip: \_\_\_\_\_  
*Please bring this form with you the day of your field trip!*

**Team Name:** \_\_\_\_\_

Teacher(s) for this team:	
Chaperone(s) for this team:	
Student Names (First and Last)	Allergies/Medical Conditions/Special Needs? Please describe.
1.	
2.	
3.	
4.	
5.	
6.	
7.	
8.	
9.	
10.	
11.	
12.	
13.	
14.	
15.	
16.	
17.	
18.	

**Team Name:** \_\_\_\_\_

Teacher(s) for this team:	
Chaperone(s) for this team:	
Student Names (First and Last)	Allergies/Medical Conditions/Special Needs? Please describe.
1.	
2.	
3.	
4.	
5.	
6.	
7.	
8.	
9.	
10.	
11.	
12.	
13.	
14.	
15.	
16.	
17.	
18.	